

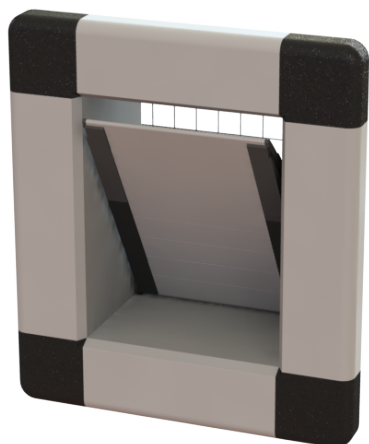
Configuration details

Product

Wall inlet horizontal

WVH

H1-V1-V-270/245-250-RDK---W/W-PU-FL/--GV-CS-A-3



Legend

H1	Horizontal inlets
V1	Vertical inlets
V	Position free
270 / 245	Width 270mm / height 245mm
250	Depth 250mm
RDK	Straight flap single turning point
-	Self-opening
W / W	Housing PVC white / Valve PVC white
PU	Valve PU filled
FL / -	Inside Flange / no outside flange
GV	Birdwire galvanised
CS	Including connection set
A	Assembled
3	Logo on corner plate: Scan-Air B.V.

Wall opening (width/height)	280mm / 255mm
Net inlet surface	472cm ²
Capacity 10pa	590m ³ /hr
Capacity 20pa	779m ³ /hr
Stroke length	310mm

